

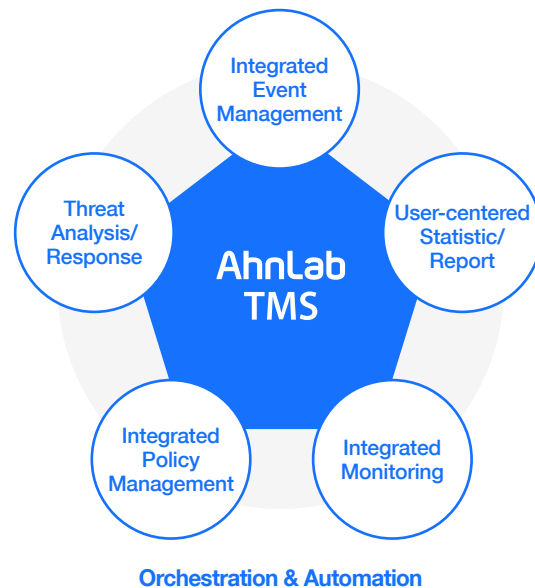
AhnLab TMS

Threat Management System for AhnLab's Products

TMS can manage the policies and rules of AhnLab's products.
It collects numerous logs and responds to various threats.

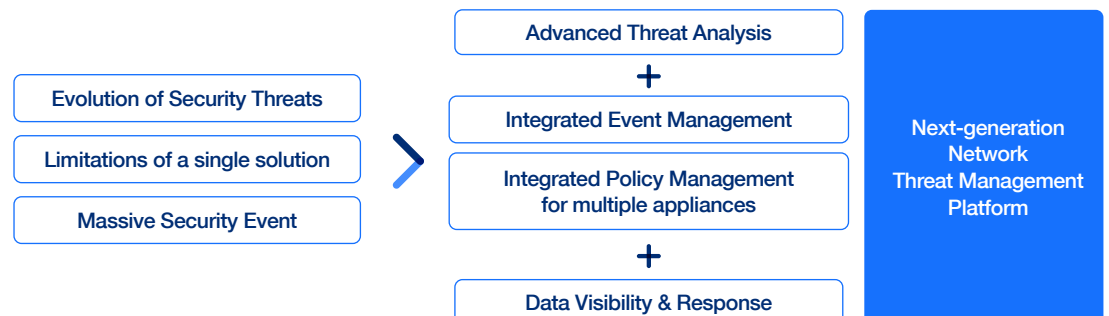
Product Overview

AhnLab TMS is the **Network Threat Management Platform** that manages multiple appliances, monitors and analyzes various threat information, and responds to interlocking appliances comprehensively. It is the next-generation threat management platform that provides efficient policy management for interlocking appliance, collection/management of high capacity events, and in-depth analysis and response with next-generation analysis technology.



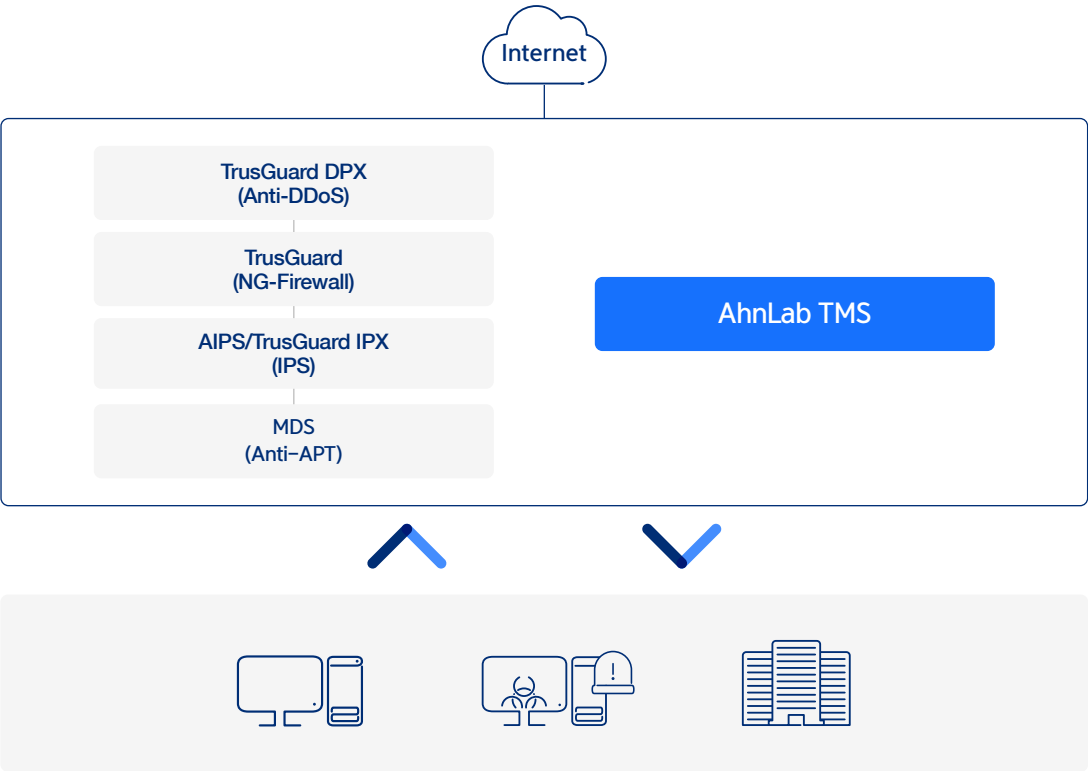
Need for Next-generation Network Threat Management

Recent network environments are diversifying from mobile to IoT devices, and security threats are evolving. The need for an integrated threat management platform that comprehensively manages and responds to changes and security threats in these environments is increasing as a single existing solution makes it difficult to respond to them.



Next-Generation
Network Threat
Management
Platform

AhnLab TMS provides integrated management of its network security solutions, next-generation firewall, IPS, DDoS solutions and APT solutions. It also provides a flexible interlocking system for integrated analysis and response to a variety of security threats that a single solution cannot respond to.



Extensive threat analysis and response from NW security to Anti-APT



Efficient and Flexible Appliance Management

- Efficient operation and monitoring of interlocking appliance
- Security policy management for multiple appliances' firewall, DDoS, VPN, and IPS (Does not support MDS policy)



Big data engine based integrated event management with high-performance

- Quick collection and management of high capacity logs collected from multiple appliances
- Quick analysis of network threat with fast discovery and flexible statistics settings
- Big data processing engine with the technology for software with high-performance



In-depth Analysis and Response to a Variety of Threats

- A comprehensive analysis of various events collected from various appliances
- In-depth threat analysis with advanced analysis technology
- Automatic response for a rapid response



DDoS



Firewall



IPS



Application



Web



Spam



Malware

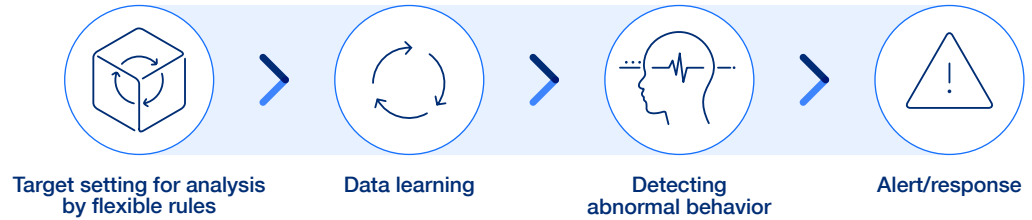


Comprehensive Network Threat Analysis

AhnLab TMS provides machine learning-based abnormal behavior for security threat analysis. It automatically analyzes large volume of events collected from a variety of interlocking appliances to support security administrators to analyze and respond to security threats more quickly and conveniently.

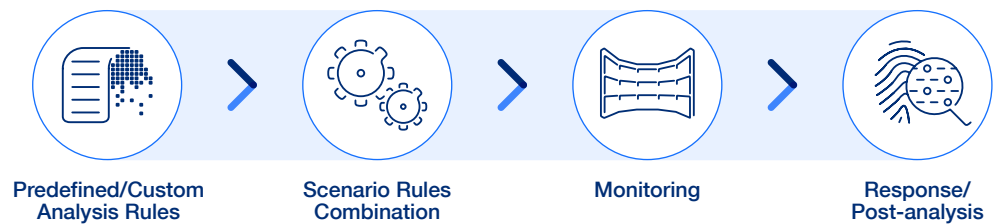
Detecting Network's Abnormal Behavior

- It provides automatic analysis that determines and alerts abnormal behavior automatically based on the patterns accumulated for the targets that require continuous monitoring and analysis



Scenario-based Correlation Analysis

- A combination of various kinds of events collected from interlocking products provides scenario-based correlation and threshold-based analysis.
- An integrated analysis of various penetration scenarios that cannot be detected in a single solution is made into multi-tier detection analysis that combine various events.

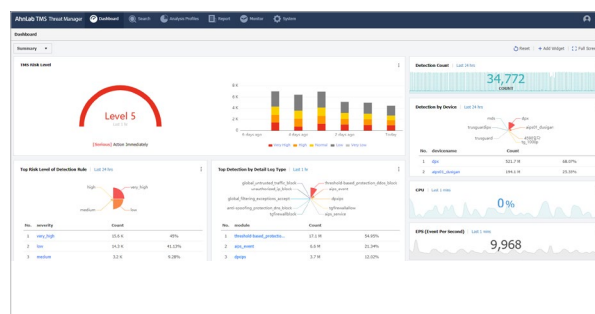


Flexible User-centered Statistics/Analysis

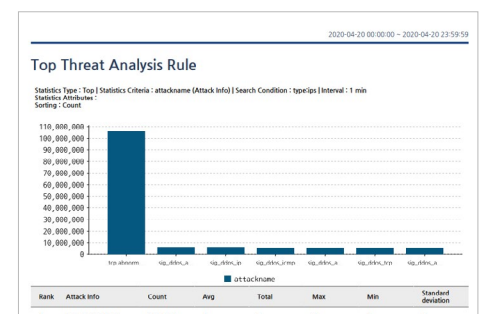
AhnLab TMS provides custom monitoring and reporting to support flexible user-centered monitoring and visibility. Security administrators scan threat events and generate them as custom statistics/analysis rules when continuous statistics and analysis are required. In addition, the generated statistics/analysis rules can be added to the custom dashboard for real-time monitoring and can be flexibly used as custom reports for reporting.



Custom Dashboard



Custom Report



Module System

AhnLab TMS provides two modules, Threat Manager and Policy Manager, for effective network threat management and integrated policy management.



Threat Manager

- Collect logs from multiple appliances and search integrated logs (TG, AIPS DPX, MDS)
- Custom Dashboard/Custom Report
- Advanced threat analysis (Correlation analysis, association analysis, abnormal behavior analysis)
- Flexible statistics monitoring
- Monitoring of system, network, security event, error status, and VPN



Policy Manager

- Integration of multiple appliances/setting and managing individual policies (Does not support MDS policy)
- Backup/restore policy
- Closed-network engine upgrade
- Cli script

Specifications

		TMS 2000B	TMS 10000B	TMS 20000B
CPU		4Core	10Core	20Core
RAM		16GB/32GB	32GB/64GB	64GB/128GB
SATA DOM		8GB	8GB	8GB
SSD		-	500GB	500GB
Interface Default (Option)	1GC	4	2	2 (Max 4)
	1GF	-	-	0 (Max 2)
	10GF	-	-	0 (Max 2)
Log Storage	RAID	-	RAID 5 ¹⁾	RAID 5 ¹⁾
	HDD	1TB Slot 1 ²⁾ Type: 1TB/2TB/4TB	3TB Slot 4 Type: 1TB/2TB/4TB/8TB/12TB	3TB Slot 8 Type: 1TB/2TB/4TB/8TB/12TB
	SSD(Optional)	Type: 960GB/1.92TB	Type: 960GB/1.92TB	Type: 960GB/1.92TB
Size (WxDxH mm)		437 X 503 X 43	437 X 507 X 43	437 X 647 X 89
Power		500W Single	800W Redundant	800W Redundant

1) RAID type option 0, 1, 5, 6, 10, 50, 60 2) The backup slot for TMS 2000B can be added.

* There can be difference for the log capacity, number of policy management, and event processing performance of AhnLab TMS, depending on the operation mode and environment and AhnLab will guide through additional technical consultations.

AhnLab, Inc.

220, Pangyoyeok-ro, Bundang-gu, Seongnam-si, Gyeonggi-do, 13493, South Korea

www.ahnlab.com / global.sales@ahnlab.com

© 2023 AhnLab, Inc. All rights reserved.

AhnLab